



# WHOLESALE DIRECT INC.

5620 WEST 65TH STREET

CHICAGO, IL 606389

PHONE: 773-585-7200

Web Site: [www.wholesaledirectinc.com](http://www.wholesaledirectinc.com)

## CALL US FOR ALL YOUR TRAILER AXLE NEEDS



**DEXTER TORFLEX AXLE**



**DEXTER SPRUNG AXLE**



**DEXTER HUB/DRUM**  
Trailer Hub/Drum 8 Stud 6.5" BCD,  
w 1/2" studs & cups. 12 X 2 " El or Hyd.  
Part # 8-219-4 \$77.50

Parts kit 219

**DEXTER**  
Electric Brake Assembly  
12 X 2 - 5 hole mount  
5,200 lb. -6,000 lb. capacity axles  
Order # 23-105 (L) 23-106 (R)

\$57.95 EACH



**DEXTER Trailer Hub/Drum**  
5 on 4.50" bolt circle. Fits 10 X 2 1/4 " electric  
or hydraulic brakes. W/ cups & studs.  
Part # 8-247-5 \$55.20

Parts kit 247

**DEXTER**  
Electric Brake Assembly  
10 X 2 1/4 - 4 hole mount  
3,500 lb. capacity axles  
Order # 23-26 (Left) 23-27 (Right)

\$55.20 EACH



**TEKONSHA PRODIGY**  
P2 PROPORTIONAL  
ELECTRONIC BRAKE CONTROL  
Part # 90885 \$145.00

**Hammer Blow**  
7,000 lb. Top wind Drop-leg Weld-on Jack.  
Drop-leg provides additional 13.5" adjustability.

Part # TWL190DL \$88.52



**Pintle Hook Mount 2",**  
10,000 lb. Capacity, solid shank,  
high & low positioning, and welded  
support bracket.  
Part # PM87 \$39.95

**HAMMER BLOW**  
12,000 lb Side wind Drop-leg Weld-on Jack  
(015181 Handle sold separately)  
Part # 182DD \$162.00



**2-1/2" Pintle Hook Mount**  
20,000 lb., 4 pairs holes,  
11.25" length.

Part # PM25812 \$81.46

**Hammer Blow**  
5000 lb. A-frame mount.  
Extends from 12.75" to 22.75".

Part # TWL175 \$49.95



**Forged Alloy Steel**  
Combination Hitch w/ 2" ball. 16,000 lb. Max.  
gross trailer weight, 3,000 lb. Max. vertical load.  
Part # BH8-2000 \$68.00

**HOPKINS ENGAGER**  
TRAILER BREAKAWAY SYSTEM  
Built in meter shows charging status.  
Part # 20100 \$57.03



If you wish to discontinue future faxed advertisements from Wholesale Direct Inc., Send your opt-out request to us by e mail to [mike@wholesaledirectinc.com](mailto:mike@wholesaledirectinc.com), by fax at 773-585-7279, or by phone 773-585-7200 ) Please specify the telephone number or fax machine number covered by your request. You can submit your request 24/7, and we will lawfully comply with in 30 days.

DUE TO TARIFF PRICES SUBJECT TO CHANGE

# WHOLESALE DIRECT INC.



5620 WEST 65TH STREET  
PHONE: 773-585-7200 FAX: 773-585-7279  
CHICAGO, IL 60638  
Web Site: [www.wholesaledirectinc.com](http://www.wholesaledirectinc.com)

If you wish to discontinue future faxed advertisements from Wholesale Direct Inc., Send your opt-out request to us by e mail to [mike@wholesaledirectinc.com](mailto:mike@wholesaledirectinc.com), by fax at 773-585-7279, or by phone 773-585-7200. Please specify the telephone number or fax machine number covered by your request. You can submit your request 24/7, and we will lawfully comply with in 30

 <p><b>NORTH AMERICAN TRAFFIC ASSIST WITH ARROW</b></p> <p><b>Part # TA18LS-A1                      \$575.00</b></p>	<p><b>DEKA TRAILER CABLE 100' spools</b></p> <table><tr><td>PT# C558 14 ga. 4 conductor</td><td>\$ 80.96</td></tr><tr><td>PT# C559 14 ga. 6 conductor</td><td>\$108.98</td></tr><tr><td>PT# C560 14 ga. 7 conductor</td><td>\$123.29</td></tr></table> 	PT# C558 14 ga. 4 conductor	\$ 80.96	PT# C559 14 ga. 6 conductor	\$108.98	PT# C560 14 ga. 7 conductor	\$123.29									
PT# C558 14 ga. 4 conductor	\$ 80.96															
PT# C559 14 ga. 6 conductor	\$108.98															
PT# C560 14 ga. 7 conductor	\$123.29															
 <p><b>FEDERAL SIGNAL BEACON LED SHORT DOME PERMANENT-PIPE MOUNT. DIE-CAST (also available in tall dome) Part # 100SD-A              \$119.00</b></p>	 <p><b>RUBBER STRETCH STRAPS</b></p> <table><tr><td>9"</td><td>Part No. 9C</td><td>\$36.33</td></tr><tr><td>15"</td><td>Part No. 15C</td><td>\$43.16</td></tr><tr><td>21"</td><td>Part No. 21C</td><td>\$44.83</td></tr><tr><td>31"</td><td>Part No. 31C</td><td>\$66.25</td></tr><tr><td>41"</td><td>Part No. 41C</td><td>\$98.50</td></tr></table> <p>Box of 50              Price is per box/50</p>	9"	Part No. 9C	\$36.33	15"	Part No. 15C	\$43.16	21"	Part No. 21C	\$44.83	31"	Part No. 31C	\$66.25	41"	Part No. 41C	\$98.50
9"	Part No. 9C	\$36.33														
15"	Part No. 15C	\$43.16														
21"	Part No. 21C	\$44.83														
31"	Part No. 31C	\$66.25														
41"	Part No. 41C	\$98.50														
 <p><b>POLLAK DIE-CAST 6 WAY CONNECTORS</b></p> <table><tr><td>11-609 SOCKET</td><td>\$7.13</td></tr><tr><td>11-605 PLUG W/ GUARD</td><td>\$5.63</td></tr><tr><td>11-604 PLUG</td><td>\$4.65</td></tr></table>	11-609 SOCKET	\$7.13	11-605 PLUG W/ GUARD	\$5.63	11-604 PLUG	\$4.65	<p><b>HIGH AMP CIRCUIT BREAKERS</b> Ideal for switch panels, power distribution panels, etc. Push-to-trip, manual reset, 1/4-28 studs with rubber boots, waterproof. Available in 50, 60, 90, 100, 120 and 150 amp.</p>  <p><b>PART # CB(AMP)PB              \$28.95</b></p>									
11-609 SOCKET	\$7.13															
11-605 PLUG W/ GUARD	\$5.63															
11-604 PLUG	\$4.65															
 <p><b>POLLAK DIE-CAST 7 WAY CONNECTORS</b></p> <table><tr><td>11-700 PLUG</td><td>\$7.67</td></tr><tr><td>11-702 PLUG W/ GUARD</td><td>\$8.97</td></tr><tr><td>11-720 SOCKET</td><td>\$9.20</td></tr></table>	11-700 PLUG	\$7.67	11-702 PLUG W/ GUARD	\$8.97	11-720 SOCKET	\$9.20	<p><b>ECCO BACK UP ALARM</b> 97dB—12volt</p>  <p><b>Part # 510                      \$25.00</b></p>									
11-700 PLUG	\$7.67															
11-702 PLUG W/ GUARD	\$8.97															
11-720 SOCKET	\$9.20															
 <p><b>FEDERAL SIGNAL LED HIGHLIGHTER</b> Low Profile 2.7"H x 15.3"L x 8.4 D. ROC LED TECHNOLOGY. Permanent mount. <b>Part # 454101HL-02              \$239.18</b></p>	<p><b>ACARI DRILL FREE TRUCK ROOF-TOP LIGHT MOUNT.</b></p> <p>LIGHTS NOT INCLUDED</p> 															

## WINTER BLADES

16', 18", 20", 22"



**\$5.95 each**

## SUMMER BLADES

16", 18", 20", 22", 24"



**\$4.95 each.**

All Blades Must be Ordered in Boxes of 10

DUE TO TARIFF PRICES SUBJECT TO CHANGE

# WHOLESALE DIRECT INC.



5620 WEST 65TH STREET  
PHONE: 773-585-7200 FAX: 773-585-7279  
CHICAGO, IL 60638  
Web Site: [www.wholesaledirectinc.com](http://www.wholesaledirectinc.com)

SIZE	PART #	WLL
1/4" x 150'	TR14P-I	3150
5/16" x 100'	TR516P-I	4700
3/8" x 75'	TR38P-I	6600

## CHAIN



Also available in half drums and full drums.



**Portable Heavy Duty lithium-ion battery jump starter pack** that delivers 2,000-amps for jump starting a dead battery. Spark-proof connections and reverse polarity protection making safe and easy for anyone to use. Gas & diesel engines. **Part# GB70**



**AIR / WATER REEL**  
50', 3/8" hose, 300 PSI. Industrial-grade drive spring is protected in a polypropylene spool.

**Part # RT650LP**



**ANCRA Webbing Winch**  
Spool width 4.63, Frame Ht. 6.19  
Frame Depth 3.50.

**PART # 43573-10 \$28.12**

**2"x27' ratchet strap w/ 2 flat hooks**  
**PART # 45982-10 \$22.95**



**w/ 2 wire hooks**  
**PART # 45982-42 \$22.95**



**ANCRA WINCH STRAP**  
4"x30' strap with flat hook

**PART # 43795-10-30 \$14.95**



**ANCRA Combination Winch Bar**  
Use for tightening ratchet straps as well as winches.

**PART # 42313-12 \$23.95**



**3M DUAL LOCK HEAVY DUTY BLACK FASTENERS**  
1" x 4.9 yards

**Part # 06484 \$120.37**

## CLASS 4 TRAILER SAFETY CHAIN

3/8 chain, 35" length, 15,000 lb., Clevis style slip hook with safety latch. Heavy duty zinc plated.

**Part #BSC3835 \$17.80**

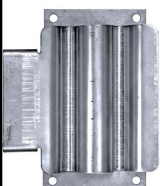


**FEDERAL SIGNAL SURFACE MOUNT LED LIGHT. MICROPULSE ULTRA, DUAL LED'S. WHITE/AMBER. EACH COLOR CAN BE STEADY BURN OR FLASH.**

**Part # MPS620U-WA \$92.85**

**FEDERAL SIGNAL CAMERA SYSTEM**  
5.6" MONITOR W 2 CAMERA INPUT.  
1 STANDARD REAR-VIEW CAMERA AND 1 65.5' EXTENSION CABLE.

**Part # CAMSET56-NTSC-2 \$525.00**



**SHOVEL HOLDER**  
Heavy Duty spring mechanism secures shovel or other round handled tool. Ideal for dump body applications  
Stainless Steel

**PART # SH675SS \$46.09**

**TEKONSHA BRAKEMAN®**  
**Compact Brake Control, for 1 to 2 Axle Trailers, Timed Actuated**

**Part # 83501 \$47.75**



DUE TO TARIFF PRICES SUBJECT TO CHANGE

If you wish to discontinue future faxed advertisements from Wholesale Direct Inc., Send your opt-out request to us by e mail to [mike@wholesaledirectinc.com](mailto:mike@wholesaledirectinc.com), by fax at 773-585-7279, or by phone 773-585-7200 ) Please specify the telephone number or fax machine number covered by your request. You can submit your request 24/7, and we will lawfully comply with in 30 days.



# WHOLESALE DIRECT INC.

5620 WEST 65TH STREET  
 PHONE: 773-585-7200 FAX: 773-585-7279  
 CHICAGO, IL 60638  
 Web Site: www.wholesaledirectinc.com



## MOUNTED TIRE & WHEEL ASSEMBLIES

480X8-C	4 OR 5 HOLE	\$ 27.50
480X12-C	4 OR 5 HOLE	\$ 49.68
530X12-C	4 OR 5 HOLE	\$ 56.92
ST175/80D13-C	5 HOLE	\$ 80.75
ST205/75D14-C	5 HOLE	\$ 94.64
ST205/75R15-C	5 HOLE	\$113.15
ST225/75R15-D	6 HOLE	\$139.77



**OPTRONICS Stop, Tail, Turn  
4" Round recess mount.**

STL-23RB (Red lens & diodes)  
 STL-23RCB (Clear lens, red diodes)  
**\$19.87**



**OPTRONICS Stop, Tail, Turn  
Standard oval recess mount.**

STL-22RB (Red lens & diodes)  
 STL-22RCB (Clear lens, red diodes)  
**\$19.87**



**RIGID DUALY LED LIGHTS**  
 With switch and harness

Single Flood 20111 (each) \$109.99  
 Single Spot 20121 (each) \$109.99  
 Pair Flood 20211 (pair) \$199.99  
 Pair Spot 20221 (pair) \$199.99

**WHELEN  
SUPER LED BEACON  
CLASS I Permanent mount**



Part # L31HAF **\$399.50**



**HELLA LIGHT BAR**

Operating voltage 12/24 VDC  
 48" 29 flash patterns, 16 LED light modules.

Part # H27941001 **\$730.00**

**OIL DRI PADS**  
 Universal pads 16"x20"



Part # L90902 (100 pads) **\$84.44**



**DEKA 14 Gauge Stranded Primary Wire**  
 Colors / Red, White, Black, Green, Yellow, Brown,  
 Blue, Orange, Grey, Purple, Dark Blue, Dark  
 Green, Tan, Pink 100' Rolls

Part # 114-(color) **\$12.70**

**KUSSMAUL AUTO-EJECT**  
 Automatically disconnects power line.  
 Designed for emergency vehicles.  
 120 volt A.C. shore line  
 (Must specify cover color)



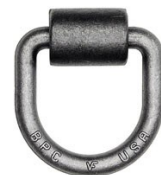
ORDER # 091-20WP-120 **\$255.00**



**STREAMLIGHT LED HL (Hi lumen)**  
**Flashlight.** 8.85" long, 12.8oz. Switch in head.  
 With piggy back charger & 2 batteries.  
**2 levels of output: hi/strobe.**  
 Both AC & DC charger included.

PART # 75434 **\$176.95**

**D-RING**  
**3/4" DIA 3"x3"**  
**9,120# WORKING LOAD LIMIT**  
 Other sizes available.



PART # B46 **\$10.92**

If you wish to discontinue future faxed advertisements from Wholesale Direct Inc., Send your opt-out request to us by e mail to [mike@wholesaledirectinc.com](mailto:mike@wholesaledirectinc.com), by fax at 773-585-7279, or by phone 773-585-7200 ) Please specify the telephone number or fax machine number covered by your request. You can submit your request 24/7, and we will lawfully comply with in 30 days.

DUE TO TARIFF PRICES SUBJECT TO CHANGE