

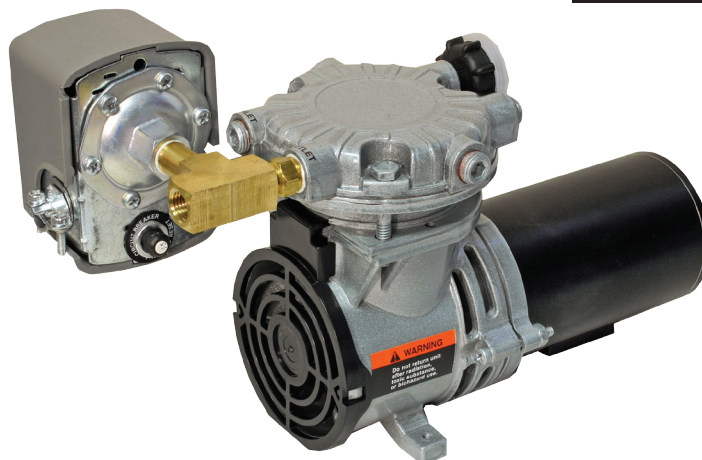


**WHOLESALE DIRECT INC.**  
5620 WEST 65TH STREET  
CHICAGO, IL 60638  
773-585-7200

## Auto Pump 12V

### Features

- 100 PSI Max Rating
- Vehicle mount compressor ensures truck air brake system is properly pressurized for immediate dispatch from station
- Pressure switch regulated operation automatically senses low pressure in air system and restores proper pressure, preventing brake lock-up
  - Factory set PSI actuation points: 75 "On", 95 "Off"
  - Adjustment differential 20 PSI, 100 PSI max
- Output: 0.30 SCFM @ 80 PSI, 0.35 SCFM @ 60 PSI
- 12V, 11A
- No interference with engine mounted air compressor
- Sealed ball bearings for long service life
- Compact size
- 15A circuit breaker installed in pressure switch



### Optional Accessories



**Auto Pump Timer: 091-150**  
Cycles power to the compressor on a 1 hour "On"/"Off" interval, conserving batteries, allowing pump cooling, and extending component life. Indicator light activates when Pump is in 'Off' mode.



**Auto Drain: 091-9-131**  
Automatically purges water separator bowl every time compressor cycles off via a 12V solenoid. Eliminates manual draining chore for maintenance personnel. Available as retrofit accessory or order pre-installed on Auto Pump.



**Vibration Dampening Mounting Plate: 091-9-12V-HP-H**  
Simplifies installation and provides vibration dampening shock mounts pressed into plate at pump mounting points.



**Auto Clean: 091-9G**  
Micron filter element removes particulates from line and extracts moisture into collector bowl with manual drain valve. Installs in Auto Pump output line 0.25" NPT female.

Part Number	Description	Electrical Data				Dimensions			Wgt.
		DC Volts	DC Amps	AC Volts	AC Amps	H	W	D	
091-9-12V	Auto Pump 12V	12	11	N/A	N/A	7.30"	6.60"	12.00"	6
091-9-12V-AD	Auto Pump 12V - Auto Drain	12	11	N/A	N/A	7.30"	6.60"	12.00"	6



**WHOLESALE DIRECT INC.**  
5620 WEST 65TH STREET  
CHICAGO, IL 60638  
773-585-7200

## Auto Pump 12V HP

### Features

- 125 PSI Max Rating
- Vehicle mount compressor ensures air brake system is properly pressurized for immediate truck departure from station
- Pressure switch regulated operation automatically senses low pressure in air system and restores proper pressure, preventing brake lock-up
  - Factory set PSI actuation points: 105 on, 125 off
  - Adjustment differential 20 PSI, 125 PSI max.
- Pressure gauge provides system status
- Output: 0.30 SCFM @ 80PSI, 0.35 SCFM @ 60PSI
- 12V, 11A
- No interference with engine mounted air compressor
- Sealed ball bearings for long service life
- Compact size, vertical or horizontal model configurations
- Auto Drain Built-in: Automatically purges water separator bowl every time compressor cycles off. Eliminates manual draining chore for maintenance personnel.
- 15A circuit breaker installed in pressure switch

### Optional Accessories



#### Auto Pump Timer: 091-150

Cycles power to the compressor on a 1 hour "On"/"Off" interval, conserving batteries, allowing pump cooling, and extending component life. Indicator light activates when Pump is in 'Off' mode.



#### Vibration Dampening

##### Mounting Plate: 091-9-12V-HP-H

Simplifies installation and provides vibration dampening shock mounts pressed into plate at pump mounting points.



Horizontal Mount



Vertical Mount

Part Number	Description	Electrical Data				Dimensions			Wgt.
		DC Volts	DC Amps	AC Volts	AC Amps	H	W	D	
091-9-12V-HP-HOR	Auto Pump 12V HP - Horizontal	12	11	N/A	N/A	7.3"	6.6"	13.7"	6
091-9-12V-HP-VER	Auto Pump 12V HP - Vertical	12	11	N/A	N/A	7.3"	6.6"	13.7"	6



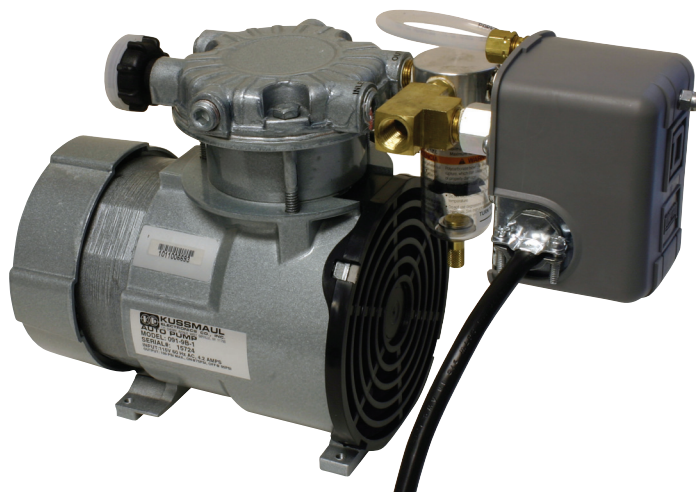
**WHOLESALE DIRECT INC.**  
5620 WEST 65TH STREET  
CHICAGO, IL 60638  
773-585-7200

## Auto Pump AC



### Features

- 100 PSI Max Rating
- Vehicle mount compressor ensures air brake system is properly pressurized for immediate truck departure from station
- Pressure switch regulated operation automatically senses low pressure in air system and restores proper pressure, preventing brake lock-up
- Pressure switch regulated operation
  - Factory set PSI actuation points: 75 on, 95 off
  - Adjustable, 20 PSI differential, 100 PSI max.
- 120V, 4A, AC operation, (240V model available)
- No interference with engine mounted air compressor
- Sealed ball bearings for long service life

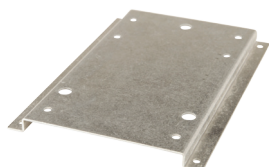


### Optional Accessories



Auto Pump Timer: 091-150-115

Cycles power to the compressor on a 1 hour "On"/"Off" interval, conserving batteries, allowing pump cooling, and extending component life. Indicator light activates when Pump is 'Off' mode. Note: Pump Timer will only work if there is an Auto Drain installed on the pump.



#### Vibration Dampening

##### Mounting Plate: 091-9-12V-HP-H

Simplifies installation and provides vibration dampening shock mounts pressed into plate at pump mounting points.



#### Auto Drain: 091-9-089

Automatically purges water separator bowl every time compressor cycles off via a normally open solenoid. Eliminates manual draining chore for maintenance personnel. Available as retrofit accessory or order pre-installed on Auto Pump.

Part Number	Description	Electrical Data				Dimensions			Wgt.
		DC Volts	DC Amps	AC Volts	AC Amps	H	W	D	
091-9B-1	Auto Pump B1	N/A	N/A	120	4.2	7.78"	5.31"	7.44"	16
091-9B-1-AD	Auto Pump B1 - Auto Drain	N/A	N/A	120	4.2	7.78"	5.31"	7.44"	16
091-9B-220	Auto Pump B1 (240V)	N/A	N/A	240	2.1	7.78"	5.31"	7.44"	16



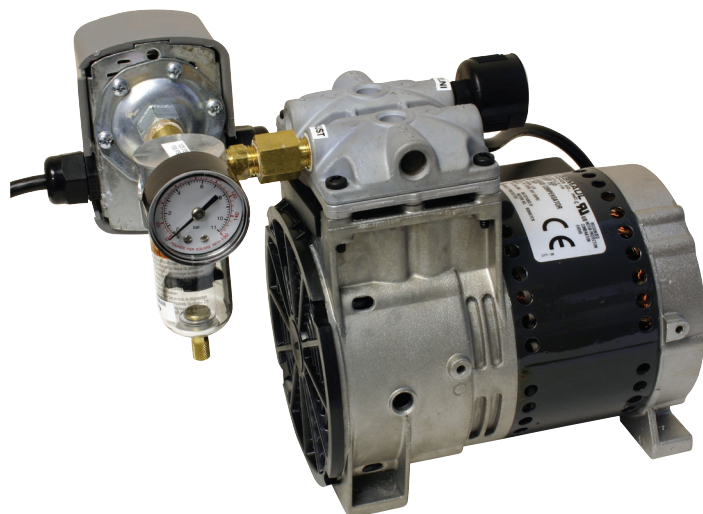


**WHOLESALE DIRECT INC.**  
5620 WEST 65TH STREET  
CHICAGO, IL 60638  
773-585-7200

## Auto Pump HP

### Features

- 125 PSI Max Rating
- Vehicle mount compressor ensures air brake system is properly pressurized for immediate truck departure from station
- Pressure switch regulated operation automatically senses low pressure in air system and restores proper pressure, preventing brake lock-up
  - Factory set actuation points: 105 on, 125 off
  - Adjustable, 20 PSI differential, 125 PSI max.
- 120V, 3.5A AC operation, (240 Volt model available)
- Pressure gauge provides system status
- No interference with engine mounted air compressor
- Sealed ball bearings for long service life



### Optional Accessories



**Auto Pump Timer: 091-150-115**

Cycles power to the compressor on a 1 hour "On"/"Off" interval, conserving batteries, allowing pump cooling, and extending component life. Indicator light activates when Pump is 'Off' mode. Note: Pump Timer will only work if there is an Auto Drain installed on the pump.



#### Vibration Dampening

**Mounting Plate: 091-9-12V-HP-H**

Simplifies installation and provides vibration dampening shock mounts pressed into plate at pump mounting points.



**Auto Drain: 091-9-090**

Automatically purges water separator bowl every time compressor cycles off via a normally open solenoid. Eliminates manual draining chore by maintenance personnel. Available as retrofit accessory or order pre-installed on Auto Pump.

Part Number	Description	Electrical Data Specs				Dimensions			Wgt
		DC Volts	DC Amps	AC Volts	AC Amps	H	W	D	
091-9HP	Auto Pump HP	N/A	N/A	120	3.5	7.50"	7.50"	9.25"	13
091-9HP-AD	Auto Pump HP - Auto Drain	N/A	N/A	120	3.5	7.50"	7.50"	9.25"	13
091-9HP-220	Auto Pump HP (240V)	N/A	N/A	240	1.7	7.50"	7.50"	9.25"	13



**WHOLESALE DIRECT INC.**  
5620 WEST 65TH STREET  
CHICAGO, IL 60638  
773-585-7200

## Auto Charge 1200 REMOTE



### Features

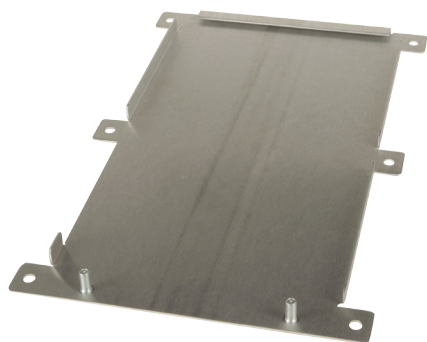
- 40A output quickly recovers batteries
- Automatically charges and supports parasitic DC loads: data terminals, radios, hand lights, etc. assuring battery is ready for vehicle start
- Automatic operation regulates output to a single battery bank
- A patented built-in sense circuit checks battery voltage 120 times per second to compensate for voltage drop in charging wires providing quick re-charge, with no overcharge
- Choice of Remote Display:
  - Bar Graph
  - Status Center
  - Status Center in Watertight Case
- Designed for rigors of emergency vehicle use; heavy duty aluminum case



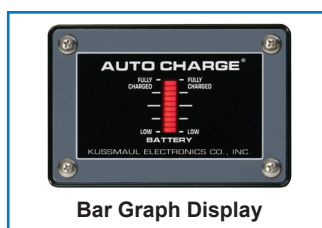
### Optional Accessory

#### E-Z Slide Mount Plate:

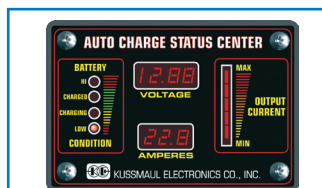
For slide-in installation and removal of the Auto Charge 1200 Remote charger in hard to access areas and spaces with minimal vertical clearance



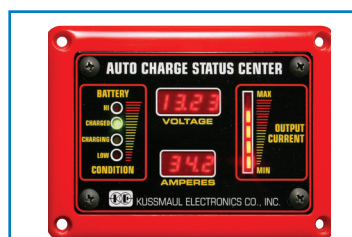
### Remote Display Options



Bar Graph Display



Status Center Display



Status Center in Watertight Case

#### Color Options

<b>YW</b>	<b>RD</b>	<b>BL</b>
Yellow	Red	Blue
<b>WH</b>	<b>GY</b>	<b>BLK</b>
White	Gray	Black

Part Number	Description	Electrical Data				Dimensions			Wgt.
		DC Volts	DC Amps	AC Volts	AC Amps	H	W	D	
091-187-12-REMOTE	1200 Remote w/ Bar Graph	12	40	120	10	13.25"	7.0"	5.25"	26
091-187-12-R-194	1200 Remote w/ Status Center	12	40	120	10	13.25"	7.0"	5.25"	26
091-187-12-R-194-WT-XX	1200 Remote w/ Watertight S.C.	12	40	120	10	13.25"	7.0"	5.25"	26
091-200-EZM	EZ Slide Mount Plate	N/A	N/A	N/A	N/A	N/A	N/A	N/A	N/A

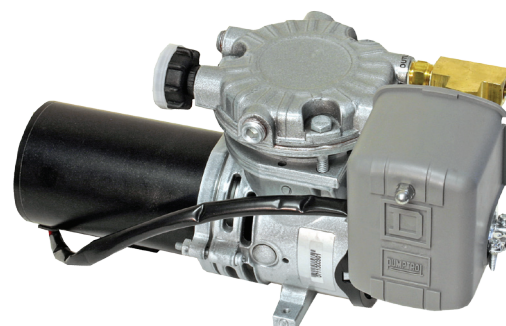


**WHOLESALE DIRECT INC.**  
5620 WEST 65TH STREET  
CHICAGO, IL 60638  
773-585-7200

## Pump Plus 1200

### Features

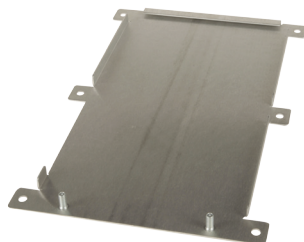
- Convenient system approach simplifies installation and wiring integration. Includes: Pump Plus 1200 and Auto Pump 12V
  - 100 PSI Max, 12V, air compressor “Auto Pump”
  - Pump Plus 1200, 40A, single battery output
    - ♦ Automatic operation regulates output to a single battery bank
    - ♦ A patented built-in sense circuit checks battery voltage 120 times per second to compensate for voltage drop in charging wires providing quick recharge, with no overcharge
    - ♦ Choice of Remote Display:
      - Bar Graph
      - Status Center
      - Status Center in watertight case
    - ♦ Air Compressor power mode selector switch
      - DC Powered full time from vehicle battery
      - AC Powered only when from battery when vehicle plugged into shore power. Automatically shuts off compressor when disconnected from shore power, taking 12A load off vehicle batteries



### Optional Accessory

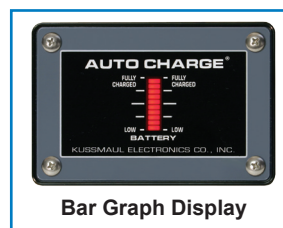
#### E-Z Slide Mount Plate:

For slide-in installation and removal of the Auto Charge 1200 Remote charger in hard to access areas and spaces with minimal vertical clearance

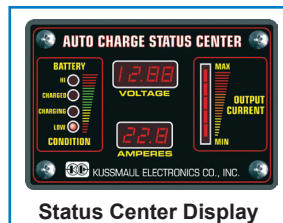


### Remote Display Options

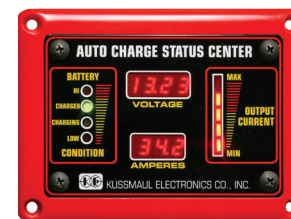
Part Number	Description
091-9-12V-1200	Pump Plus 1200, with Bar Graph Display
091-9-1200-Charger Only	Pump Plus 1200 Charger Only
091-9-12V-1200-194	Pump Plus 1200, with Status Center
091-9-12V-1200-194-WT-XX	Pump Plus 1200, with Watertight Status Center



Bar Graph Display



Status Center Display



Status Center in Watertight Case

#### Color Options

YW	RD	BL
Yellow	Red	Blue
WH	GY	BLK
White	Gray	Black



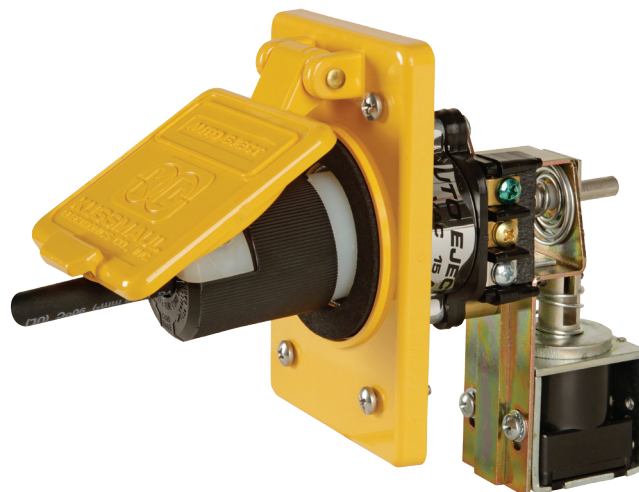


**WHOLESALE DIRECT INC.**  
5620 WEST 65TH STREET  
CHICAGO, IL 60638  
773-585-7200

## WP Auto Eject

### Features

- 15 or 20A AC, or 15A DC receptacle
- Upon sensing engine start, plug ejects from receptacle and away from vehicle path; eliminating dangerous severing of cord
- After eject, weatherproof cover snaps into position over inlet
- 3.4" rear projection installs in vehicle side walls with limited depth clearance
- 6 cover color options
- System includes: Auto-Eject, Cover, and Plug



### Optional Accessories



**Dynamic Disconnect:**  
Sequences energizing of Auto Eject eliminating terminal arcing when connecting and disconnecting.  
Model #: **091-18-098**



**Rear Enclosure:**  
For installations that expose rear of Auto Eject to dirt and debris.  
Model #: **091-18CP**



**EZ Mounting Plate with Power Indicator:**  
Assemble and pre-wire Auto-Eject in this stainless steel plate, then mount to vehicle wall. Green indicator light confirms inlet is energized.  
Model #: **091-185-010**

#### Weatherproof Cover Color Options



091-3YW



091-3WH



091-3BL



091-3BLK



091-3RD



091-3GY

Part Number	Description	Electrical Data				Dimensions			Wgt.
		DC Volts	DC Amps	AC Volts	AC Amps	H	W	D	
091-18WP-120	WP Auto Eject	12	N/A	120	15	5.70"	3.30"	3.40"	2
091-20WP-120	WP Auto Eject	12	N/A	120	20	5.70"	3.30"	3.40"	2
091-18WP-012	WP Auto Eject (12V/240V)	12	15	240	15	5.70"	3.30"	3.40"	2

When ordering specify: Cover color code

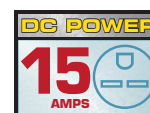


**WHOLESALE DIRECT INC.**  
5620 WEST 65TH STREET  
CHICAGO, IL 60638  
773-585-7200

## Super Auto Eject

### Features

- 15 or 20A AC, or 15A DC receptacle
- Upon sensing engine start, plug ejects from receptacle and away from vehicle path; eliminating dangerous severing of cord
- Sense circuit sequences energizing of Auto Eject eliminating terminal arcing when connecting and disconnecting
- After eject, weatherproof cover snaps into position over inlet
- Weatherproof back enclosure with watertight cable fittings protects mechanism from road contamination
- Pre-wired with 3' AC cord and eject sense wire, side entry standard, back entry option
- System includes: Auto-Eject, Cover, Plug, and pre-wired with 3' AC power and Eject Sense Wire



### Optional Configuration



**Back Wire:**  
For installations with rear rather than side wire orientation.  
Specify BW when ordering

### Optional Accessory



**EZ Mounting Plate with Power Indicator:**  
Assemble and pre-wire Auto-Eject in this stainless steel plate, then mount to vehicle wall. Watertight green indicator light confirms vehicle is energized.  
Model #: **091-185-009**

#### Weatherproof Cover Color Options



091-55YW



091-55WH



091-55BL



091-55BLK



091-55RD



091-55GY

Part Number	Description	Electrical Data				Dimensions			Wgt.
		DC Volts	DC Amps	AC Volts	AC Amps	H	W	D	
091-55-15-120	Super 15 Auto Eject	12	N/A	120	15	6.17"	4.08"	2.80"	4
091-55-20-120	Super 20 Auto Eject	12	N/A	120	20	6.17"	4.08"	2.80"	4
091-55-15-DC	Super 15 Auto Eject - DC	12	15	240	15	6.17"	4.08"	2.80"	4

When ordering specify: Cover color code • BW for back wire option • 24V for 24 volt actuator operation





**WHOLESALE DIRECT INC.**  
5620 WEST 65TH STREET  
CHICAGO, IL 60638  
773-585-7200

## Auto ISOLATOR I

### Features

- System consists of a controller that detects when a vehicle's alternator is charging the main battery and then closes a solenoid to tie-in charge to an auxiliary battery
- When the engine is stopped or charge voltage is no longer present, the solenoid opens to isolate the batteries
- Upon "cranking" the engine with a charged auxiliary battery, the solenoid is energized to parallel the batteries and provide a starting boost
- If the auxiliary battery is low, the controller senses that condition and the batteries are not paralleled.
- Uses a solenoid rather than an isolation diode which typically causes a 0.7 volt drop, thus auxiliary battery receives full charge voltage
- The starting boost provided by the paralleled batteries is especially useful in cold weather or when the battery is low

### Specifications

**Auto Isolator I Controller:** 091-139-CONT-12

**Actuation Voltage:**  $\leq 13.3V$  (field adjustable)

**Battery Load:** 0.000125A

**Output Current:** 3A

**Auto Isolator I Solenoid:** 091-139-SOL-12HO

**Volts:** 12V

**Coil Current:** .65A

**Contact Rating:** 200A cont./600A surge



Controller



Solenoid

Part Number	Description	Dimensions			Wgt.
		H	W	D	
091-139-CONT-12	Auto Isolator I Controller	5.10"	2.95"	1.55"	0.4
091-139-SOL-12HO	Auto Isolator I Solenoid	3.60"	3.30"	2.80"	2.0



**WHOLESALE DIRECT INC.**  
5620 WEST 65TH STREET  
CHICAGO, IL 60638  
773-585-7200

## Auto ISOLATOR 3

### Features

- System consists of a controller and two separate solenoids, for switching the batteries
- Allows a three battery system to be isolated from each other
- The system receives its power from the Battery 1 input or it can be switched on/off
- When any of the 3 batteries go above 13.2 volts all 3 batteries are paralleled by the solenoids being energized thus charging all 3 batteries and will disconnect the batteries when the voltage drops below 12.6 volts

### Specifications

**Auto Isolator 3 Controller: 091-208-CONT-12**

**Volts to parallel, normal operation:** 13.2 volts

**Hysteresis:** 0.60 volts (13.2 volts on - 12.6 volts off)

**Battery Load:** 0.020A

**Output Current:** 3A

**Auto Isolator 3 Solenoid: 091-139-SOL-12HO**

**Volts:** 12V

**Coil Current:** .65A

**Contact Rating:** 200A cont./600A surge

Note that Auto Isolator 3 uses two of this solenoid



Controller



Solenoid

Part Number	Description	Dimensions			Wgt.
		H	W	D	
091-208-CONT-12	Auto Isolator 3 Controller	5.10"	2.95"	1.55"	0.4
091-139-SOL-12HO	Auto Isolator 3 Solenoid	3.60"	3.30"	2.80"	2.0



**WHOLESALE DIRECT INC.**  
 5620 WEST 65TH STREET  
 CHICAGO, IL 60638  
 773-585-7200

## Solar Panels

### Features

- Industrial grade panel, components and heavy duty mounts designed for emergency vehicle use
- Numerous size panels match available roof space (1.2 to 7+A); panels can be wired for higher output
- Voltage controller adapts to properly charging different battery types
- Kits contain all parts needed for various types of vehicle installations
- 12 and 24V kits

### Benefits

- Keep up with radio load without running engine or plugging in
- Helps comply with anti idle laws
- Saves fuel cost and engine maintenance
- Eliminate the need to jump start reserve vehicles
- Ideal for vehicles with mobile computers and radio's

### Kit Includes

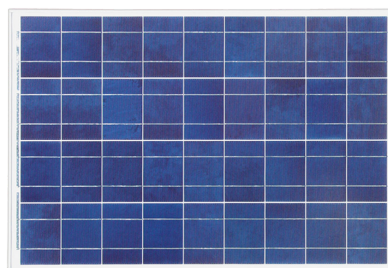
Detailed instructions and parts provided, assures professional installation, eliminates installer guess work and parts sourcing

- Industrial grade solar panel with 10 year warranty
- Charge controller with temperature compensated, three-step output and battery type selection (Flooded/AGM)
- Heavy duty vibration dampened mounting system
- 20 foot duplex wire, terminals and cable ties
- Waterproof wire feed-through fitting included
- All mounting hardware included for various truck installations



**Complete Heavy Duty Kits Designed for  
Emergency Vehicle Installation**

**Solar Panel**



**Z-Brackets and  
Waterproof Cable Entry**



**Controller**



**Wiring & Connectors**

Part Number	Description	Electrical Data Specs		Dimensions			Wgt.
		DC Volts	DC Amps	H	W	D	
092-1220-0	SOL 20	12	1.2	0.98"	13.8"	21.7"	6.2
092-1245-0	SOL 45	12	2.5	1.38"	21.0"	26.2"	11.0
092-1265-0	SOL 65	12	3.7	1.38"	21.3"	38.9"	13.2
092-1280-0	SOL 80	12	4.9	1.38"	26.3"	39.9"	19.8
092-1210-0	SOL 100	12	5.9	1.38"	26.3"	39.9"	19.8
092-1220-1	SOL 120	12	7.0	1.97"	26.0"	57.7"	26.5
092-2440-0	SOL-24-40	24	1.2	1.38"	21.1"	26.2"	11.0
092-2460-0	SOL-24-60	24	1.7	1.38"	21.3"	38.9"	15.4
092-2485-0	SOL-24-85	24	2.5	1.38"	26.3"	39.9"	19.8
092-2412-0	SOL-24-120	24	3.6	1.97"	26.0"	57.7"	26.5
092-2421-0	SOL-24-210	24	7.1	1.97"	39.1"	64.6"	39.7





**WHOLESALE DIRECT INC.**  
5620 WEST 65TH STREET  
CHICAGO, IL 60638  
773-585-7200

Use the following selection guide to configure the components needed for a custom system:

1) Select number and size of 12 or 24V solar panels to meet your power and space requirements.

Note, you may mix sizes of panels within a voltage range.

2) Add up the amperage of the selected panels

3) Select controller that exceeds the total DC amp output of the panels selected.

4) Specify the part numbers of the panels and controller selected on your order.

Note, mounting hardware, wire, and wire feed through fitting is included with each panel.

### 12V Systems

#### 12V Solar Panels

Part Number	Description	Electrical Data Specs		Dimensions			Wgt.
		DC Volts	DC Amps	H	W	D	
607-1220-0	SP 20	12	1.2	0.98"	13.8"	21.7"	6.2
607-1245-0	SP 45	12	2.5	1.38"	21.0"	26.2"	11.0
607-1265-0	SP 65	12	3.7	1.38"	21.3"	38.9"	13.2
607-1280-0	SP 80	12	4.9	1.38"	26.3"	39.9"	19.8
607-1210-0	SP 100	12	5.9	1.38"	26.3"	39.9"	19.8
607-1220-0	SP 120	12	7.0	1.97"	26.0"	57.7"	26.5

#### 12V Controllers

Part Number	Description	Electrical Data Specs		Dimensions			Wgt.
		DC Volts	DC Amps	H	W	D	
608-0010-0	SC-12-10	12	10	6.0"	2.2"	1.3"	1
608-0020-0	SC-12-20	12	20	6.0"	2.2"	1.3"	1
608-0030-0	SC-12/24-30	12	30	6.0"	4.14"	2.17"	1

### 24V Systems

#### 24V Solar Panels

Part Number	Description	Electrical Data Specs		Dimensions			Wgt.
		DC Volts	DC Amps	H	W	D	
607-2440-0	SP-24-40	24	1.2	1.38"	21.1"	26.2"	11.0
607-2460-0	SP-24-60	24	1.7	1.38"	21.3"	38.9"	15.4
607-2485-0	SP-24-85	24	2.5	1.38"	26.3"	39.9"	19.8
607-2412-0	SP-24-120	24	3.6	1.97"	26.0"	57.7"	26.5
607-2421-0	SP-24-210	24	7.1	1.97"	39.1"	64.6"	39.7

#### 24V Controllers

Part Number	Description	Electrical Data Specs		Dimensions			Wgt.
		DC Volts	DC Amps	H	W	D	
608-2410-0	SC-24-10	24	10	6.0"	2.2"	1.3"	1
608-2420-0	SC-24-20	24	20	6.0"	2.2"	1.3"	1
608-0030-0	SC-12/24-30	24	30	6.0"	4.14"	2.17"	1

Contact factory for other panels and controllers not listed above.